



---

# S O U T H E R N L A D Y

---

SLEEP BETTER. FEEL BETTER.

---

HANDMADE IN CHARLESTON  
SINCE 1914

# Boutique for Home

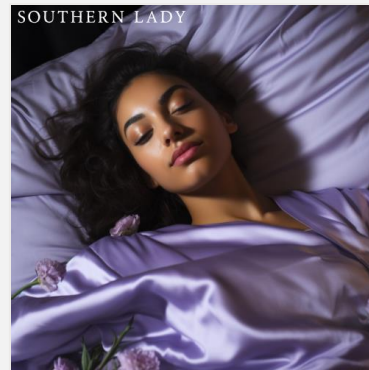
collection

Southern Lady has been manufacturing high-end mattresses since 1914. Our bedding is found in luxury resorts, inns and Boutique Hotels across the United States.

The Boutique for Home Series is a collection of beautiful, comfortable bedding whose quality greatly exceeds the associated price point. Resort guests call us often to purchase their own Southern Lady mattresses after experiencing a great night's sleep at one of our hospitality client's properties. Imagine a bedding set that is comfortable enough for the most demanding guests and durable enough to hold up in hotels! **This collection is now available to the public through select dealers.**

### A few of our Boutique mattress clients:

- The Spectator Hotel - *Charleston, South Carolina*
- French Quarter Inn - *Charleston, South Carolina*
- The Abernathy Hotel – *Clemson, South Carolina*
- Planters Inn – *Charleston, South Carolina*
- The Saint Hotel – *Charleston, SC*
- The Cuthbert House - *Beaufort, SC*



Along with the painstaking detail invested into design and the handcrafting of our mattresses to create the works of art seen throughout this collection, there are a few **features** that come **standard** on all Southern Lady® Boutique for Home Collection.

### Platform & Adjustable Bed Friendly with 12-year warranty

Every mattress in the Boutique Collection is adjustable friendly. We have a lot of pride in the product that we've been building for 110 years, and we would like all our customers and their patrons to rest assured.



### POP Package included

Beautiful Posters, Footers and Pillow protectors saying “found in top hotels in US”



### Fully Foam Encased Edges

People use hotel beds differently than their beds at home. There is a demand for superior durability and edge support that only 1.8 Density foam encasement can provide. Our boutique mattresses possess the highest of integrity to complement its breathtaking appearance and feel.



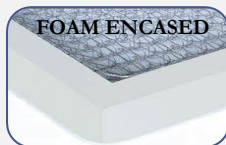
# French Quarter

Southern Lady Premium Flip Mattress



## Specifications

|                          |  |
|--------------------------|--|
| <b>Coil Style</b>        | Pocketed Coil                              |
| <b>Coil Density</b>      | 700 Series                                 |
| <b>Coil Gauge</b>        | 14   |
| <b>Edge Support</b>      | 4" 1.8 Density Foam Encasement             |
| <b>Upholstery 1</b>      | Flex Anti Pocket Layer                     |
| <b>Upholstery 2</b>      | 1" Neverwake Foam                          |
| <b>Bottom Upholstery</b> | Flip Me! 2 Sided                           |
| <b>Quilt Layer 1</b>     | Antimicrobial FR Fiber<br>7/8" Dreamweaver |
| <b>Quilt Layer 2</b>     | Foam<br>7/8" Dreamweaver                   |
| <b>Quilt Layer 3</b>     | Foam                                       |
| <b>Cover</b>             | Cooling Tencil Tuft                        |
| <b>Fire Retardant</b>    | 16 CFR 1633 Compliant                      |
| <b>Warranty</b>          | 10/10 Non-Prorated                         |
| <b>Mattress Height</b>   | 14.5" (+/- 1/2")                           |



Total Edge Support around mattress perimeter



Button Tuft and Luxury Tack and Jump options available



The premium quilting foam for the Boutique collection, Dreamweaver foam is the nuance that elevates comfort to nirvana, and gives the quilt its voluminous draw



# THE SPECTATOR

HISTORIC | HOTEL | CHARLESTON

## Specifications

|                   |   |
|-------------------|---|
| Coil Style        | Pocketed Coil                                 |
| Coil Density      | 600 Series                                    |
| Coil Gauge        | 14.5  |
| Edge Support      | 4" 1.8 Density Foam Encasement                |
|                   | Convuluted Airflow Foam                       |
| Upholstery 1      | Foam  |
| Upholstery 2      | 3" cloudnine Foam Core                        |
| Bottom Upholstery | 1" Foam Support Layer                         |
| Quilt Layer 1     | Antimicrobial FR Fiber                        |
| Quilt Layer 2     | 7/8" Dreamweaver                              |
| Quilt Layer 3     | 7/8" Dreamweaver                              |
| Cover             | Cooling Tack & Jumped with Box Quilted Border |
| Fire Retardant    | 16 CFR 1633 Compliant                         |
| Warranty          | 10/10 Non-Prorated                            |
| Mattress Height   | 15.5" (+/- 1/2")                              |



Total Edge Support around mattress perimeter



Coollest cover ever featured, the WhiteWonder has the construct to endure the greatest tests



The heart of the premier Eurotop, the cloudnine reduces motion transfer and allows for **advanced airflow**



The premium quilting foam for the Boutique collection, it is the nuance that elevates comfort to nirvana

# LAVENDER

Designer Favorite

Also available in 2-sided flip

## Specifications

|                   |                                |
|-------------------|--------------------------------|
| Coil Style        | Pocketed Coil                  |
| Coil Density      | 600 Series                     |
| Coil Gauge        | 14.5                           |
| Edge Support      | 4" 1.8 Density Foam Encasement |
| Upholstery 1      | 3" cloudnine Foam Core         |
| Upholstery 2      | 1.5" Convoluted Airflow Foam   |
| Bottom Upholstery | 1" Support Layer               |
| Quilt Layer 1     | Antimicrobial FR Fiber         |
| Quilt Layer 2     | 7/8" Dreamweaver               |
| Quilt Layer 3     | 7/8" Dreamweaver               |
| Cover             | Quilted Lavender Cover         |
| Fire Retardant    | 16 CFR 1633 Compliant          |
| Warranty          | 10/10 Non-Prorated             |
| Mattress Height   | 15.5" (+/- 1/2")               |



Total Edge Support  
around  
mattress perimeter



Complete Lavender  
Design for Mattress  
Set



The heart of the  
premier Eurotop, this  
foam reduces motion  
transfer and allows  
for advanced airflow



The premium quilting  
foam of the Boutique  
Series collection



# THE SPECTATOR

SERENE EDITION



Superior Performance



Reduced Motion Transfer



Supportive Airflow

## Specifications

|                   |   |
|-------------------|---|
| Coil Style        | Pocketed Coil                               |
| Coil Density      | 600 Series                                  |
| Coil Gauge        | 14.5  |
| Edge Support      | 4" 1.8 Density Foam Encasement              |
|                   | Convoluted Airflow Foam                     |
| Upholstery 1      | 2" Serene Foam Core                         |
| Upholstery 2      | 1" Firmlife Foam                            |
| Upholstery 3      | 1" Support Layer                            |
| Bottom Upholstery | 1" Support Layer                            |
| Quilt Layer 1     | Antimicrobial FR Fiber                      |
| Quilt Layer 2     | 7/8" Dreamweaver                            |
| Quilt Layer 3     | 7/8" Dreamweaver                            |
| Cover             | Cooling w Vertically Quilted Channel Border |
| Fire Retardant    | 16 CFR 1633 Compliant                       |
| Warranty          | 10/10 Non-Prorated                          |
| Mattress Height   | 15.5" (+/- 1/2")                            |



Total Edge Support  
Around  
Perimeter of  
Mattress



Our second coolest cover with the benefits of copper infusion



Premier memory foam feel with superior supportive airflow and reduced motion transfer



The premium quilting foam for the Boutique collection, it is the nuance that elevates comfort to nirvana



# VITALITY

Longevity Centric Mattress

Copper is a mineral in the human body needed to stay healthy. The body uses copper to carry out important functions like making energy, connective tissues, and blood vessels. The body also needs copper for brain development<sup>1</sup>. Copper can help the body form collagen, a protein that helps make up one's bones and tissues<sup>2</sup>.

## Specifications

|                         |   |
|-------------------------|---|
| Coil Style              | Pocketed Coil                             |
| Coil Density            | 600 Series                                |
| Coil Gauge              | 14.5                                      |
| Edge Support            | 4" 1.8 Density Foam Encasement            |
|                         | Convuluted Airflow Foam                   |
| Upholstery 1            | Foam                                      |
| Upholstery 2            | 2" Serene Foam Core                       |
| Upholstery 3            | 1" Firmlife Foam                          |
| Bottom Upholstery       | 1" Support Layer                          |
| Quilt Layer 1           | Antimicrobial FR Fiber                    |
| Quilt Layer 2           | 1" Copper Infused Memory Quilting Foam    |
| Quilt Layer 3           | 5/8" Quilting Foam                        |
| Cover                   | Cooling Copper Cover w Quilted Box Border |
| Fire Retardant Warranty | 16 CFR 1633 Compliant 10/10 Non-Prorated  |
| Mattress Height         | 15.5" (+/- 1/2")                          |



Total Edge Support  
Around  
Perimeter of  
Mattress



Our second coolest  
cover with the  
benefits of copper  
infusion



Premier memory  
foam feel with  
superior supportive  
airflow and reduced  
motion transfer



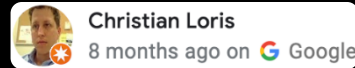
The premium  
quilting foam for the  
Boutique collection,  
it is the nuance that  
elevates comfort to  
nirvana



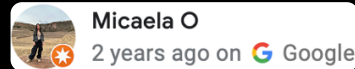
1. National Institute of Health Copper Fact Sheet for Consumers <https://ods.od.nih.gov/factsheets/Copper-Consumer/>  
2. WebMD, Copper and Your Health <https://www.webmd.com/vitamins-and-supplements/copper-your-health>



# Testimonials



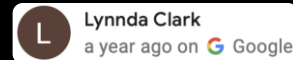
"Room was immaculate and bedding was grade A." – 5/5



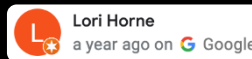
"The rooms are big and the bed is super comfortable." – 5/5



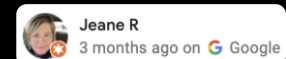
"But the real star of our stay was the mattress. It was so incredibly comfortable that we couldn't resist asking the concierge about it... we promptly ordered one for our own home – it was that good!" 5/5



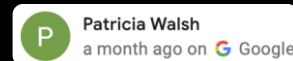
"The bed is like sleeping on a cloud." – 5/5



"Bed was very comfortable" – 5/5



"Bed was comfy" – 5/5



"Our bed was very comfortable, and we slept the longest we'd slept in a while." – 5/5



# Our Story



This fifth-generation company remains family-owned and operated, manufacturing wholesale mattresses to residential stores, hotels and resorts, colleges, cruise ships and more. Browse our proven models and contract us if you would like a custom model built just for you.

Julius H. Weil Anson Street in Charleston, SC 1914



Manufacturing Plant, North Charleston, SC 2019



Julius H. Weil began manufacturing mattresses and boxsprings on Anson Street in Charleston, SC over 100 years ago. In the 1970's, Southern Lady® moved to Meeting Street, and moved again in 2000 to a 60,000 square foot state-of-the-art plant in North Charleston.



# Service to the Environment

Southern Lady® is committed to sustainable and responsible business practices through eco-friendly products and components, efficient operations, and recycling initiatives.



Natural Quilted Cover Options



Renew™ is produced with Carpenter Co.'s Natural Foam Technology™ process, ensuring the consistency and quality Southern Lady customers have come to expect. It's bio-based, allowing customers to leave a smaller environmental footprint, while reducing our nation's dependency on foreign oil.



CertiPUR-US® certification requires low-emissions for indoor air quality, and products made without ozone-depleters, formaldehyde, PBDE's, prohibited phthalates, lead, mercury and other materials of concern.



Post Consumer Recycled Steel Coils

Southern Lady® innerspring mattresses contain coil systems from Leggett & Platt, who uses 95% recycled steel in their mattress coil manufacturing process. Close to a million tons of recycled scrap steel are used in the manufacturing of Leggett & Platt products each year.



Future Foam developed the HARVEST® line of foam products, which utilize a blend of natural oil (such as Soy) polyol and conventional polyols. This benefits farmers looking for new markets for the crops they grow.



OEKO-TEX® textiles and fabrics are certified free of harmful chemicals and are safe for human use. All fabric designs meet Oeko-Tex 100 standards, which are internationally recognized safety standards for harmful substances.





SOUTHERN LADY

TELEPHONE: 843-722-2585

FAX: 843-722-0338

4290 PIGGLY WIGGLY DRIVE

NORTH CHARLESTON, SC 29405

[WWW.SOUTHERNLADYMFG.COM](http://WWW.SOUTHERNLADYMFG.COM)

[SALES@SOUTHERNLADYMFG.COM](mailto:SALES@SOUTHERNLADYMFG.COM)

